



Need STA, MTA or Respite?

Strathdee Lodge in Bundaberg can accommodate up to six people in our purpose-built disability retreat.

- **Fully qualified support workers**
- Pool with hoist
- Accessible bathrooms
- Open plan lounge & dining areas
- Great food using local produce
- Fabulous gardens
- Outdoor kitchen & BBQ area
- Wheelchair vehicles
- All rooms have their own TV



Talk to us

We would love to hear from you so we can tailor accommodation to suit you.

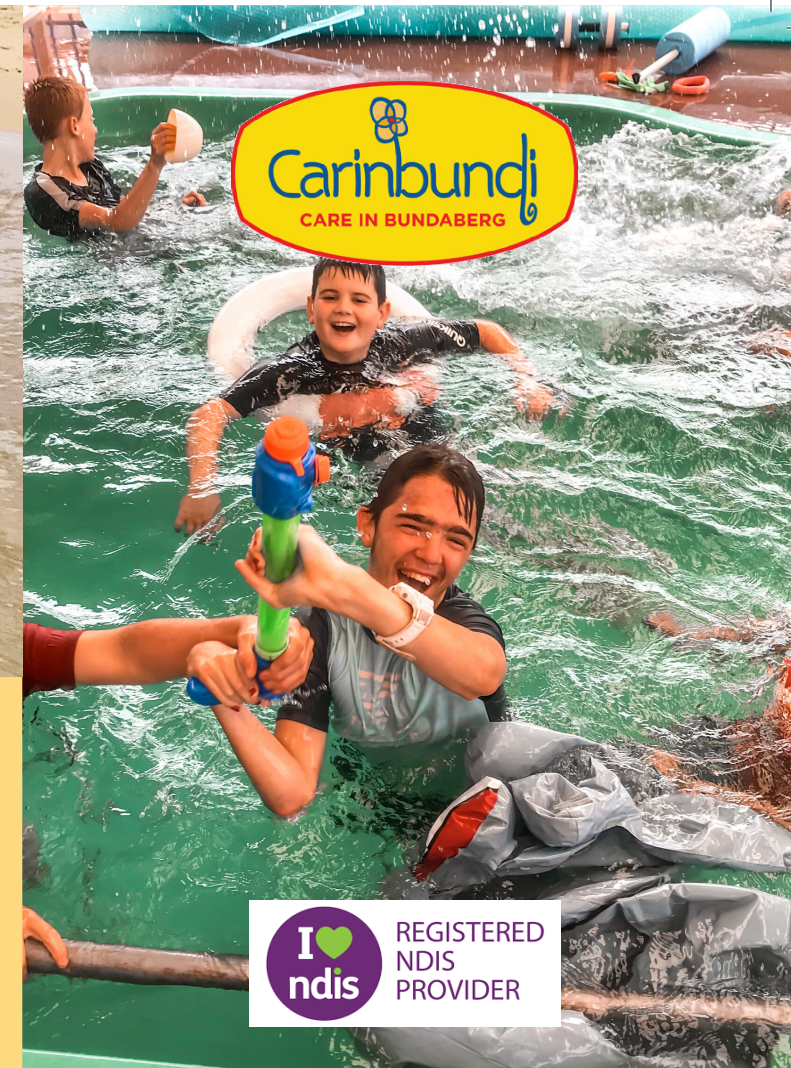
(short and medium term accommodation, respite & emergency)

Call our Respite Team at Carinbundi on
07 4158 9600

or

carinbundi@carinbundi.com.au

Address: 52a Hinkler Avenue
Bundaberg, 4670
www.carinbundi.com.au



Strathdee Lodge

**SHORT & MEDIUM TERM
ACCOMMODATION/RESPITE
BUNDABERG, QLD**



Testimonials

Dan has been going to Carinbundi since it started, and he really enjoys his stays there. It's a real home away from home. (Di)

"I was always happy with the support Wayne received at respite. The staff are always so supportive and I feel comfortable knowing he is being well looked after." (Dianne)

"I love meeting up with all the people and going out for dinner." (Sarah)



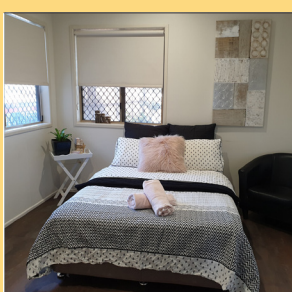
Pool with hoist



Healthy Food Options. All diets catered for.



Making Friends



Time to relax



SHORT & MEDIUM TERM ACCOMMODATION

INCLUDES RESPITE & EMERGENCY ACCOMMODATION

Short-term accommodation for people with an NDIS plan gives people with a disability, their family and carers a break from the every-day.

It's a great opportunity to try new activities, meet new friends all while being in a supported environment.

It also means family and carers can focus on other commitments.



Our facility provides a safe and enriching environment where people with disability can develop their skills.

It is suitable for both adults and children with disability and caters to individual needs.

It's a great opportunity for people to make new friends and get involved in activities within the community as well as in-house.

It also helps develop independent living and social skills.

Most importantly, it enables carers to feel confident their loved one is receiving a high level of care and support.

Whatever you choose, you can be assured our dedicated staff will be focused on your needs and those of the person you are caring for.